

# Authentic Listening

---

## Audio Source:

<http://www.abc.net.au/radionational/programs/futuretense/robots2c-humans-and-the-future---part-two/3998314>

## ROBOTS, HUMANS AND THE FUTURE

When you think of robots are they ever squishy and flexible? Or are they always just hard, cold metallic machines? In the second part of our robots series we speak to some of the world's leading researchers to explore what the robots of the future might look and feel like, and also how they will interact with us, their human overlords! And we'll also meet the world's first robotic comedian!



Photo: A colourful robot. (Robot filtered; davedehetre, Flickr.com, Creative Commons.)

Listen to the recording and provide extended answer to the questions below.

### Part 1. Carl Elliott Smith & Pr Rodney Brook

1. What's Rodney Brook's title and where does he work?
2. What is Rodney Brook's prediction for the next 50 years as far as robots are concerned?
3. How would these changes affect housewives?
4. When the PCs were introduced in the 1980s, there were predictions that they would replace office workers. While this hasn't happened, what has changed?
5. What is this radio program going to focus on, as per Carl Elliott Smith?
6. What is *The Roomba*? By whom and when was it first developed? What's the difference between the first *The Roomba* and *The Roomba* of today?
7. Rodney Brooks talks about some unexpected developments as far as *The Roomba* and other robots built by the company are concerned. What are they? Give some examples to illustrate your answer.



# Authentic Listening

---

## Part 2. Carl Elliott Smith & Pr Mary-Anne Williams

8. What is Professor Mary-Anne Williams' main field of interest?
9. The robots of today are standalone devices. Explain what this means. What does the future hold for robots?
10. What does social robotics look into?



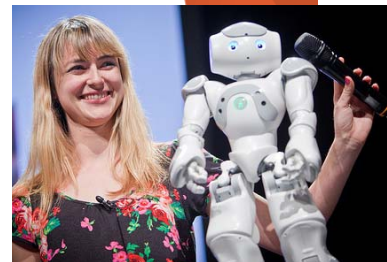
## Part 3. Carl Elliott Smith & Pr Rolf Pfeifer

11. Where does Prof. Rolf Pfeifer work and what's his area of expertise?
12. What is *soft robotics*? What makes people interested in soft robotics?



## Part 4. Carl Elliott Smith & Dr Heather Knight

13. Where does Dr Heather Knight work and what's her area of expertise?
14. What is *Data's* 'specialisation'?
15. How does *Data* interact with humans?
16. How did *Kismet* interact with humans?



## Part 5. Carl Elliott Smith & Pr Rodney Brook

17. What could happen if the boundaries between the humans and robots are blurred?
18. Why does Pr Brook believe that there could be some problems if robots look too much like humans?

## Part 6. Carl Elliott Smith, Pr Rodney Brook & Pr Rolf Pfeifer

19. Carl Elliott says that it seems there's a schism (here: split, difference of opinions between two groups of people ) between the advocates of the humanlike robots and their opponents. What side does Pr Rodney Brook support? Pr Rolf Pfeifer?

# Authentic Listening

---

## Part 7. Carl Elliott Smith & Associate Professor Mari Velonaki

20. W does Associate Professor Mari Velonaki work and what's her area of expertise?

21. What is the Fish-Bird project?

22. What are the three stages of the project?

Stage 1 \_\_\_\_\_

Stage 2 \_\_\_\_\_

Stage 3 \_\_\_\_\_



## Part 8. Carl Elliott Smith & the other discussion participants

*Carl Elliott Smith: So far on the program we've explored what the robots of the future might look and feel like, and we've looked at how humans and robots will interact at a personal level. But are there also questions that we need to start asking ourselves now about the bigger picture, for example how will we govern robots in society, and do we need to be careful of these new human-savvy robots?*

**Listen to the recording and note down the responses**

*Rodney Brook*

*Mary-Anne Williams*

*Antony Funnel*